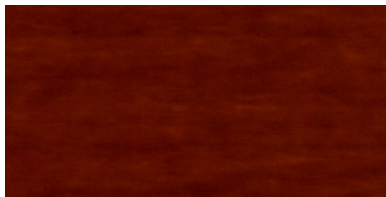




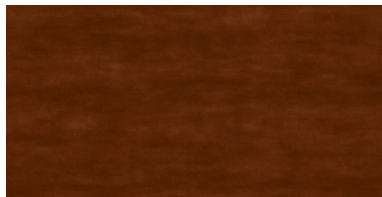
www.vikingfence.com • Locally owned since 1975 • Bonded and insured for your protection  
9602 Gray Blvd. • Austin, TX 78758 • 521.837.6411

Let Viking Fence stain your wood fence. Viking Fence has dedicated and trained professionals that apply the stain you choose. Choose the color you desire from the chart and Viking's team will ensure a professional application. Viking is committed to giving you the best quality, value and service when it comes to enriching and protecting the look of your fence. Call us today for a free quote.

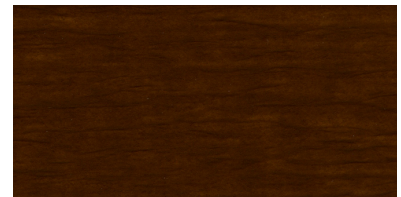
**WHEN YOU THINK FENCE STAINING, THINK VIKING!**



Redwood • SW 3501



Yankee Barn • SW 3505



Riverwood • SW 3507



Cedar Bark • SW 3511



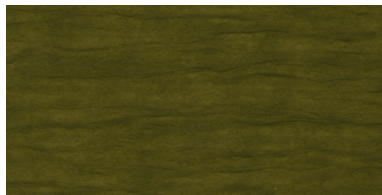
Cider Mill • SW 3512



Spice Chest • SW 3513



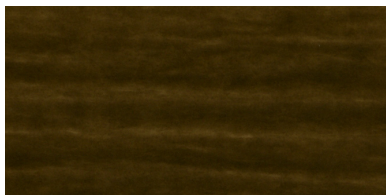
Hawthorne • SW 3518



Ficus • SW 3520



Banyan Brown • SW 3522



Chestnut • SW 3524



Blue Shadow • SW 3531



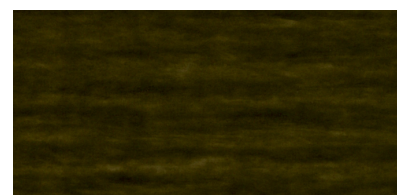
Leeward • SW 3533



Foliage • SW 3535



Mountain Ash • SW 3540



Harbor Mist • SW 3541

Samples approximate the actual stain color. Color applied to wood may vary due to wood species, porosity of wood and age. CMD 07-04-641



**SHERWIN-WILLIAMS®**

Sherwin-Williams Woodscapes® Semi-Transparent Stain provides warranted durability and color retention year after year, unlike conventional stains that fade and weather after only a year or two.

- Rich, long lasting appearance with long-term color retention and mildew resistance
- Smooth application without the mess of conventional stains
- Penetrates for long-lasting protection
- Apply in temperatures as low as 35 degrees F

Woodscapes®, the best choice for long lasting beauty and durability.



**WHEN YOU THINK FENCE STAINING, THINK VIKING!**

[www.vikingfence.com](http://www.vikingfence.com)

Locally owned since 1975 • Bonded and insured for your protection  
9602 Gray Blvd. • Austin, TX 78758 • 521.837.6411